



# XHEZ7.W-N-8001 - Through-penetration Firestop Systems Certified for Canada

## Design/System/Construction/Assembly Usage Disclaimer

- Authorities Having Jurisdiction should be consulted in all cases as to the particular requirements covering the installation and use of UL Certified products, equipment, system, devices, and materials.
- Authorities Having Jurisdiction should be consulted before construction.
- Fire resistance assemblies and products are developed by the design submitter and have been investigated by UL for compliance with applicable requirements. The published information cannot always address every construction nuance encountered in the field.
- When field issues arise, it is recommended the first contact for assistance be the technical service staff provided by the product manufacturer noted for the design. Users of fire resistance assemblies are advised to consult the general Guide Information for each product category and each group of assemblies. The Guide Information includes specifics concerning alternate materials and alternate methods of construction.
- Only products which bear UL's Mark are considered Certified.

## Through-penetration Firestop Systems Certified for Canada

### **XHEZ - Through-penetration Firestop Systems**

### **XHEZ7 - Through-penetration Firestop Systems Certified for Canada**

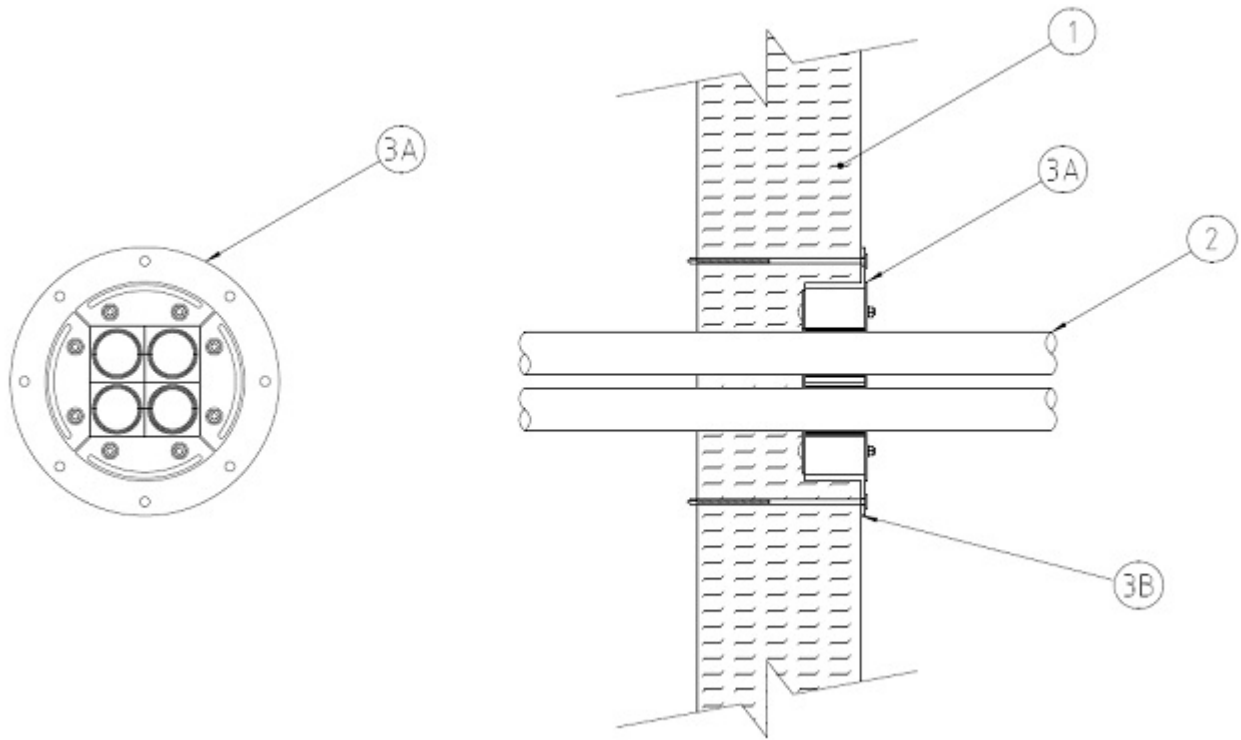
[See General Information for Through-penetration Firestop Systems](#)

[See General Information for Through-penetration Firestop Systems Certified for Canada](#)

### **System No. W-N-8001**

June 16, 2021

<b>ANSI/UL1479 (ASTM E814)</b>	<b>CAN/ULC S115</b>
F Rating — 2 Hr	F Rating — 2 Hr
T Ratings — 0, 1 and 1-1/4 Hr (See Items 2 and 3A)	FT Ratings — 0, 1 and 1-1/4 Hr (See Items 2 and 3A)
L Rating At Ambient — Less Than 1 CFM per Device	FH Rating — 2 Hr
L Rating At 400°F — Less Than 1 CFM per Device	FTH Ratings — 0, 1 and 1-1/4 Hr (See Items 2 and 3A)
	L Rating At Ambient — Less Than 0.5 L/s Per Device
	L Rating At 204°C — Less Than 0.5 L/s Per Device



1. **Partition Panel Units\*** — The 2 hr fire rated composite wall assembly shall be constructed of nom 6 in. (152 mm) thick coated steel faced **Partition Panel Units\*** (CJMR) installed in the manner specified in Wall and Partition Design No. U059 in the Fire Resistance Directory. Panel cutout sized to fit OD and depth of recessed device sleeve. Max diam of panel cutout is 9-1/64 in. (229 mm). Panel cutout of steel skin is required at both sides of opening. As an option, the steel skin cutout on side of wall opposite firestop device can be smaller and of sufficient size to accommodate the passing of the through penetrant. Panel cutout shall extend into the insulation core of the panel at one side of wall to accommodate the depth of the recessed firestop device sleeve. Opening can be located on or off panel unit joints. After installation of firestop device and through penetrant, retained cutout pieces of the insulation core are used to fill any visible voids between and around the penetrant to be flush with face of wall.

#### **DURASYSTEMS BARRIERS INC** — DuraWall Panels

2. **Through-Penetrants** — Within the loading area for the firestop device, the penetrants may represent a 0 to 100 percent visual fill, with max one penetrant installed through each elastomeric module within the device. Penetrants to be installed through the firestop device and the insulation core of the partition panel to pass through the opening. Penetrants to be rigidly supported on both sides of wall assembly.

A. **Cables** — The following cable types may be used:

A1. Max 350 kcmil (or smaller) copper conductor shielded or unshielded power cable with polyvinyl chloride (PVC) jacket and ethylene-propylene rubber (EPR) insulation. **When this cable is used, the T, FT and FTH Ratings are 1 hr.**

A2. Max 24 pr 16 AWG (or smaller) copper conductor communication cable with polyvinyl chloride insulation and jacket materials. **When this cable is used, the T, FT and FTH Ratings are 1 hr.**

B. **Metallic Penetrants** — The following types and sizes of metallic penetrants may be used:

B1. Nom 3/4 in. (19 mm) diam (or smaller) Sch 40 steel conduit. **When this conduit is used, the T, FT and FTH Ratings are 1-1/4 hr.**

3. **Firestop System** — The firestop system shall consist of the following:

A. **Firestop Device\*** — Circular firestop device for use in precut or preformed openings, sized to the ID and depth of the recessed device sleeve. The device is intended to be installed into the panel cutout at one side of wall with the circular flange of device installed flush against steel skin of partition panel. Each device consists of an elastomeric insert, steel compression plates and multi diameter sealing module(s). The square packing space of each device shall be filled with one or multiple rows of multi diameter elastomeric sealing modules. The layers of the module are removed one by one until a max gap of 0.04 (1 mm) is formed between the two modules halves. After installation of the device into the precut opening, the nuts of the compression plate are tightened to form an effective seal around

the penetrating item Firestop device secured in place with min 1/4 in. (6 mm) diam by min 6-1/2 in. (165 mm) long washer head lag screws within each preformed hole in device flange around periphery of opening and extending through full thickness of partition panel. Firestop device installed in accordance with the accompanying installation instructions.

**ROXTEC INTERNATIONAL AB** — Types R-70, R-75, R-100, R-125, R-127, R-150, R-200 and their corresponding sleeves SLFR70, SLFR75, SLFR100, SLFR125, SLFR127, SLFR150 and SLFR200.

**ROXTEC INTERNATIONAL AB** — Types R-70 ES, R-75 ES, R-100 ES, R-125 ES, R-127 ES, R-150 ES, R-200 ES and their corresponding sleeves SLFR70, SLFR75, SLFR100, SLFR125, SLFR127, SLFR150 and SLFR200.

**ROXTEC INC** — Types R-100, R-127, R-150, R-200 and their corresponding sleeves SLFR100, SLFR127, SLFR150 and SLFR200.

**Where RM EM B or RM PE B elastomeric sealing modules are used, T, FT and FTH Ratings are 0 Hr.**

**B. Fill, Void or Cavity Material\* — Sealant** — Nom 3/8 in. (10 mm) bead of fill material applied around the periphery of the firestop device sleeve flange at the interface with the steel skin of the partition panel. In addition, for L Rating, sealant shall be applied on the device sleeve flange to seal each screw head location.

See **Fill, Void or Cavity Material** (XHHW) category in the Fire Resistance Directory for the names of manufacturers. Any sealant or caulk material meeting the above specification and bearing the UL Classification Marking may be used.

**\* Indicates such products shall bear the UL or cUL Certification Mark for jurisdictions employing the UL or cUL Certification (such as Canada), respectively.**

Last Updated on 2021-06-16

---

The appearance of a company's name or product in this database does not in itself assure that products so identified have been manufactured under UL's Follow-Up Service. Only those products bearing the UL Mark should be considered to be Certified and covered under UL's Follow-Up Service. Always look for the Mark on the product.

UL permits the reproduction of the material contained in the Online Certification Directory subject to the following conditions: 1. The Guide Information, Assemblies, Constructions, Designs, Systems, and/or Certifications (files) must be presented in their entirety and in a non-misleading manner, without any manipulation of the data (or drawings). 2. The statement "Reprinted from the Online Certifications Directory with permission from UL" must appear adjacent to the extracted material. In addition, the reprinted material must include a copyright notice in the following format: "© 2021 UL LLC"