

XHEZ.C-AJ-3160 - Through-penetration Firestop Systems

Design/System/Construction/Assembly Usage Disclaimer

- Authorities Having Jurisdiction should be consulted in all cases as to the particular requirements covering the installation and use of UL Certified products, equipment, system, devices, and materials.
- Authorities Having Jurisdiction should be consulted before construction.
- Fire resistance assemblies and products are developed by the design submitter and have been investigated by UL for compliance with applicable requirements. The published information cannot always address every construction nuance encountered in the field.
- When field issues arise, it is recommended the first contact for assistance be the technical service staff provided by the product manufacturer noted for the design. Users of fire resistance assemblies are advised to consult the general Guide Information for each product category and each group of assemblies. The Guide Information includes specifics concerning alternate materials and alternate methods of construction.
- Only products which bear UL's Mark are considered Certified.

XHEZ - Through-penetration Firestop Systems

XHEZ7 - Through-penetration Firestop Systems Certified for Canada

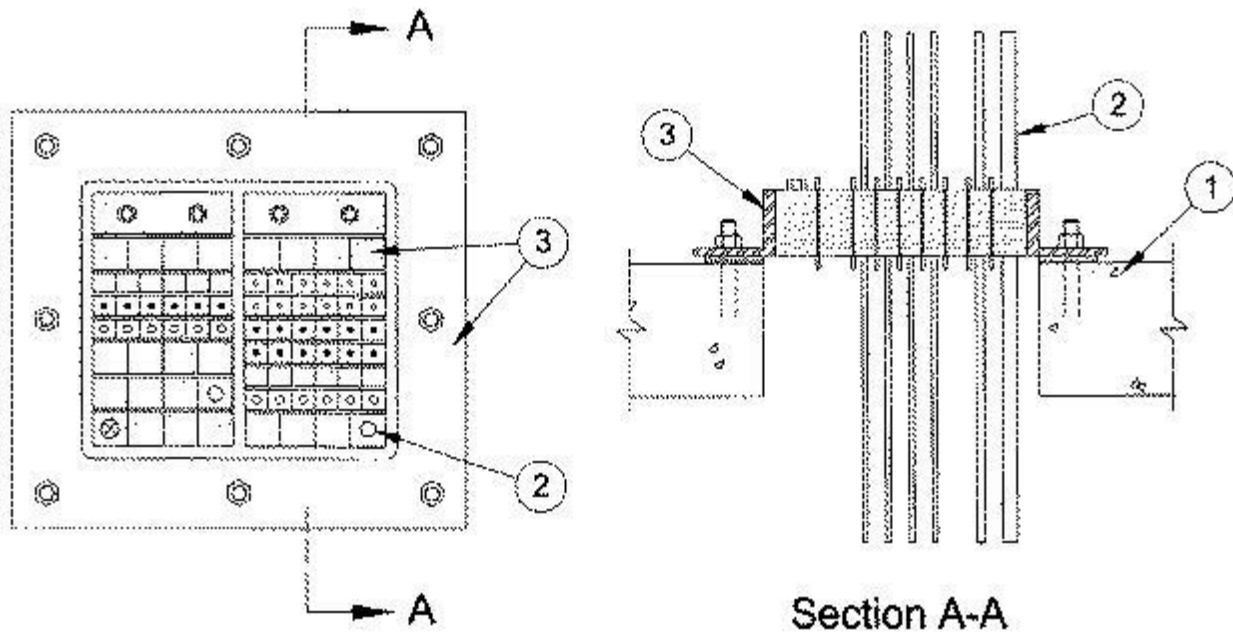
[See General Information for Through-penetration Firestop Systems](#)

[See General Information for Through-penetration Firestop Systems Certified for Canada](#)

System No. C-AJ-3160

July 24, 2020

ANSI/UL1479 (ASTM E814)	CAN/ULC S115
F Rating — 3 Hr	F Rating — 3 Hr
T Ratings — 1/2 and 1 Hr (See Item 2)	FT Ratings — 1/2 and 1 Hr (See Item 2)
L Rating At Ambient — Less Than 1 CFM/sq ft	FH Rating — 3 Hr
L Rating At 400 F — Less Than 1 CFM/sq ft	FTH Ratings — 1/2 and 1 Hr (See Item 2)
	L Rating At Ambient — Less Than 5.1 L/s/m ³
	L Rating At 400 F — Less Than 5.1 L/s/m ³



1. **Floor or Wall Assembly** — Min 4-1/2 in. (114 mm) thick reinforced lightweight or normal weight (100-150 pcf or 1600-2400 kg/m³) concrete. Wall may also be constructed of any UL Classified **Concrete Blocks***. Size of opening is not to exceed the outside dimensions of the firestop device frame (Item 3A), excluding the mounting flange. Max area of opening is 100 sq in. (645 cm²) with max dimension of 11-5/8 in. (295 mm).

2. **Cables** — Cables to be rigidly supported on both sides of floor or wall assembly. The following types and sizes of cables may be used:

A. Max 12 pair No. 22 AWG copper conductor communication cable with polyvinyl chloride insulation and jacket materials. **When max 12 pair No. 22 AWG communication cable is used, T Rating is 1 hr.**

B. Multiple fiber optical communication cables jacketed with polyvinyl chloride and having a max outside diam of 1/4 in. (6 mm). **When optical fiber communication cable is used, the T, FT and FTH Ratings are 1 hr.**

C. Max 100 pair No. 24 AWG copper conductor communication cable with polyvinyl chloride insulation and jacket materials. A max of one 100 pr or two 50 pair No. 24 AWG communication cables may be used in each firestop device steel frame module. **When max 100 pair No. 24 AWG communication cable is used, the T, FT and FTH Ratings are 1/2 hr.**

3. **Firestop System** — The firestop system shall consist of the following:

A. **Firestop Device*** — Firestop device consists of a rectangular steel frame with a steel mounting flange, multi diameter elastomeric sealing modules, steel stay plates and a compression unit consisting of a ROX Wedge. The firestop device shall be installed on the top surface of the floor and on both surfaces of the wall assembly in conjunction with elastomeric gaskets in accordance with the accompanying installation instructions. The steel frame of the firestop device shall be secured to the floor or wall surfaces with 3/8 in. (10 mm) diam steel anchor bolts and steel washers through holes drilled in the device frame mounting flange and spaced max 8 in. (203 mm) OC. The rectangular opening(s) of the device frame shall be filled with multiple rows of multi diameter elastomeric sealing modules with a max of one cable in each sealing module. The sheets of the multi diameter sealing modules halves are removed one by one until a max gap of 0.04 in. (1 mm) is formed between the two modules halves when the module halves are installed around the individual cable. When the number of sealing modules exceeds the number of cables, the solid cylindrical cores of the unpenetrated multi diameter sealing modules shall be left in place or "blank" (solid) sealing modules shall be used. During installation of the elastomeric sealing modules, thin steel stay plates shall be used to separate the rows of sealing modules and to retain the sealing modules within the steel frame. After installation of the modules, the bolts of the compression unit are tightened to form an effective seal around the through penetrants and insert modules.

ROXTEC INC — B-2x1, B-4x1, B-6x1, B-8x1, G-2X1, G-2X2, G-4X1, G-4X2, G-6X1, G-6X2, G-8X1, GH-2X1, GH-2X2, GH-4X1, GH-4X2, GH-6X1, GH-6X2, GH-8X1, GHM-2X1, GHM-2X2, GHM-4X1, GHM-4X2, GHM-6X1, GHM-6X2, GHM-8X1, GH BG-2X1, GH BG-2X2, GH BG-4X1, GH BG-4X2, GH BG-6X1, GH BG-6X2, GH BG-8X1, GHM BG-2X1, GHM BG-2X2, GHM BG-4X1, GHM BG-4X2,

GHM BG-6X1, GHM BG-6X2, ,GHM BG-8X1, GOH-2x1, GOH-4x1, GOH-6x1, GOH-8x1, GKOH-2x1, GKOH-4x1, GKOH-6x1, GKOH-8x1, SF-2X1, SF-2X2, SF-4X1, SF-4X2, SF-6X1, SF-6X2, SF-8x1

ROXTEC INTERNATIONAL AB — B-2x1, B-4x1, B-6x1, B-8x1, G-2X1, G-2X2, G-4X1, G-4X2, G-6X1, G-6X2, G-8X1, GH-2X1, GH-2X2, GH-4X1, GH-4X2, GH-6X1, GH-6X2, GH-8X1, GHM-2X1, GHM-2X2, GHM-4X1, GHM-4X2, GHM-6X1, GHM-6X2, GHM-8X1, GH BG-2X1, GH BG-2X2, GH BG-4X1, GH BG-4X2, GH BG-6X1, GH BG-6X2, GH BG-8X1, GHM BG-2X1, GHM BG-2X2, GHM BG-4X1, GHM BG-4X2, GHM BG-6X1, GHM BG-6X2, ,GHM BG-8X1, GOH-2x1, GOH-4x1, GOH-6x1, GOH-8x1, GKOH-2x1, GKOH-4x1, GKOH-6x1, GKOH-8x1, SF-2X1, SF-2X2, SF-4X1, SF-4X2, SF-6X1, SF-6X2, SF-8x1

B. Sealant or Gasket — (Not Shown, Optional) — Two continuous min 1/4 in. (6 mm) diam beads of silicone RTV sealant shall be applied as a gasket between the device frame mounting flange and the floor or wall surface. As an alternate to the RTV sealant, a nom 5/16 in. (8 mm) thick by 5/16 in. (8 mm) wide butyl rubber gasket with self-adhesive may be installed around the mounting flange. The sealant beads or gasket shall be recessed in approx 1/2 in. (13 mm) and 2 in. (51 mm) from the perimeter of the device frame mounting flange such that the continuous beads bracket the line of fasteners along each side of the device.

*** Indicates such products shall bear the UL or cUL Certification Mark for jurisdictions employing the UL or cUL Certification (such as Canada), respectively.**

Last Updated on 2020-07-24

The appearance of a company's name or product in this database does not in itself assure that products so identified have been manufactured under UL's Follow-Up Service. Only those products bearing the UL Mark should be considered to be Certified and covered under UL's Follow-Up Service. Always look for the Mark on the product.

UL permits the reproduction of the material contained in the Online Certification Directory subject to the following conditions: 1. The Guide Information, Assemblies, Constructions, Designs, Systems, and/or Certifications (files) must be presented in their entirety and in a non-misleading manner, without any manipulation of the data (or drawings). 2. The statement "Reprinted from the Online Certifications Directory with permission from UL" must appear adjacent to the extracted material. In addition, the reprinted material must include a copyright notice in the following format: "© 2021 UL LLC"